

Cannabinoid Potency Analysis by High Performance Liquid Chromatography

Test Accreditation #: 77802

Sample ID #: 112531

Sample Details

Product: Hemp Oil Care Spray 2oz 1200mg Natural
Sample: 101818G
LOT: FG001988
Sampled Product: Infused Product
Method: FE04 HPLC1100-1
Molds/Pests: N/A

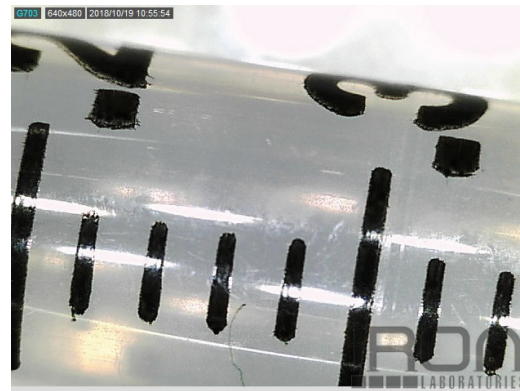
Test Conditions

Scale: XS205-MI2
Temp.: 21.6 °C
Baro Pressure: 983.8 hPa

Test Date: 10/18/2018

Simple Cannabinoid Profile Overview

Sample Size: 1 g
Total Product Size: 56 g
****Total Cannabinoids:** 1,366.4 mg (24.4 mg/g)



Test Compounds	CBDV*	CBDA	CBD	CBC*	CBG*	CBN	THC	THCA	THCV*		Calc. Max	CBD Decarb. %	THC Decarb. %
Amount	N/D	N/D	24.4 mg/g	N/D	N/D	N/D	N/D [†]	N/D	N/D	THC	0.0 mg/g	100%	N/A
LOQ	2 mg/g	2 mg/g	2 mg/g	2 mg/g	2 mg/g	2 mg/g	2 mg/g	2 mg/g	2 mg/g	CBD	24.4 mg/g	-	-
Amount per Serving [~]	N/D	N/D	24.4 mg/g	N/D	N/D	N/D	N/D	N/D	N/D	-	Serving Size[~] (g)	1.00 g	-
Uncertainty	±5% RSD	±5% RSD	±5% RSD	±5% RSD	±5% RSD	±5% RSD	±5% RSD	±5% RSD	±5% RSD	-	-	-	-

[†] This passes our quality control guidelines for non-psychoactive industrial hemp oil.

LOQ = Limit of Quantitation; %RSD = Relative Standard Deviation; N/D = Not Detected

[‡] Uncertainty measurement is for the test procedure and the instrument used; and is calculated in accordance with the ISO "Guide of Uncertainty in Measurement" (GUM) Test Results and uncertainty are only representative of the sample submit to Iron Laboratories. Uncertainty does not account for any uncertainty in the sampling. The measurement of uncertainty is the expanded uncertainty and is an estimate of uncertainty calculated with normal distribution and a coverage factor of 2 (K=2) to approximate a 95% confidence level.

* Designates compounds that are not currently included in Iron Laboratories' accredited scope.

CBD Decarb. % refers to the percentage of CBD relative to CBDA.

Calc. Max is the calculated sum of CBD and the amount of CBD derived from CBDA. These values are calculated by applying a molar correction factor of 0.877 to the CBDA value.

All lab testing is performed by a third party facility at one of the labs listed below. The results are taken from a sample of this product. This Certificate of Analysis (COA) is for internal use only and shall not be replicated or shared without written approval from CBD Guru.

** Total Cannabinoids is the calculated total amount of cannabinoids in the finished product. This value is found by multiplying the test results from the sample by the total product size.



ISO/IEC 17025:2005 Accredited



[Signature]

Management Signature